

# MACHINERY CLASSIFIED

THE INDUSTRY'S NO. 1 PRODUCTION EQUIPMENT JOURNAL

SEPTEMBER 2021 ISSUE 1

## Same Car. Same Spec. Same Dealership.



£19,000



£20,000



£21,000

Buying a car or a **machine tool** can be a daunting task.  
If you don't negotiate hard you might not get the best price!  
Others may well purchase the same item you buy, but for less.

**Here at XYZ we do things a little differently...**

We believe above all in fairness and treating customers as we would like to be treated.  
You can rest assured that the price you pay is the price every company pays... Big, Small, New or Regular,  
**every customer pays the same.**

Our price negotiation policy is simple and straightforward.

XYZ promises that everyone gets our  
**best price, automatically, every time.**

**XYZ**  
*Machine Tools*

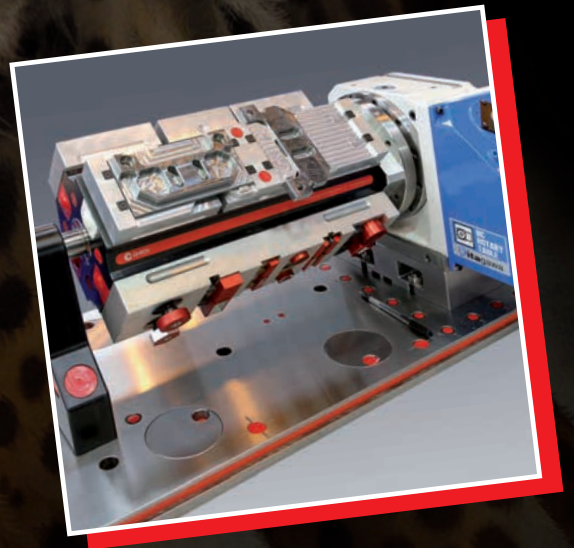
To book your demo please call us on 01823 674200  
[sales@xyzmachinetools.com](mailto:sales@xyzmachinetools.com) [xyzmachinetools.com](http://xyzmachinetools.com)

SHOWROOMS AT: DEVON NUNEATON SHEFFIELD & LONDON



# Fast and precise component workholding?

The answer's  
**YES**



## Chick

from 1st MTA

The UK's leading machining accessory supplier.

Email: [enquiries@1mta.com](mailto:enquiries@1mta.com) Freephone: 0800 783 0510

Fax: 0800 783 0517 [www.1mta.com](http://www.1mta.com)



# MACHINERY CLASSIFIED

Official Publishing Partner of the EAMTM British Branch



<b>News and views</b>	<b>4</b>
CBI survey finds manufacturing growth eases	4
UK consortium to develop prototype solid-state batteries	4
UK car production falls	4
Sandvik Coromant starts work on new UK HQ	6
New Battista hits the open road in California	6
Matsuura partners up	6
£600k casting facility upgrade completed	7
PTC to digitally transform the MTC	7
Briefs	7
<b>Machines of the Week</b>	<b>8</b>
<b>Classification Index</b>	<b>9</b>
<b>Classified Listings</b>	<b>10</b>
<b>Supplier Focus</b>	<b>10</b>
<b>Machinery Wanted</b>	<b>20</b>

**NEED ACCESS  
TO A GDPR  
COMPLIANT  
EMAIL  
DISTRIBUTION  
LIST?**

**CONTACT US ON  
01322  
221144**

**MACHINERY  
CLASSIFIED**

**The Online Market Place  
for New and Used Machine Tools**



**WWW. MACHINERY CLASSIFIED .co.uk**



## contacts

**Editor Justin Burns**

T: 01322 221144

E: editor@machineryclassified.co.uk

**Sales Executive Paul Thompson**

M: 07967 169092

E: paul.thompson@markallengroup.com

**Production Manager Nicki McKenna**

E: nicki.mckenna@markallengroup.com

**Circulation Manager Chris Jones**

E: chris.jones@markallengroup.com

**Publisher Jon Benson**

E: jon.benson@markallengroup.com

Subscription rates for  
non-qualifying personnel:

UK: £81 pa. Overseas: £118 pa.

Airmail: £153 pa.

For your free copy every fortnight,  
call circulation department: 01322 221144

## MA Business

Part of **Mark Allen**

www.markallengroup.com

### Machinery Classified

Hawley Mill, Hawley Road,  
Dartford, Kent DA2 7TJ England

T: +44 (0) 1322 221144

F: +44 (0) 1322 221188

E: sales@machineryclassified.co.uk

www.machineryclassified.co.uk

© 2021. All rights reserved. No part of *Machinery Classified* may be reproduced or transmitted in any form, by any means, electronic or mechanical, including photocopying, recording or any information storage or retrieval system, without permission in writing from the publisher.

Please read our privacy policy by visiting <http://privacypolicy.markallengroup.com>. This will explain how we process, use & safeguard your data.

The views expressed do not necessarily represent those of the editor or *Machinery Classified*. Advertisements in the journal do not imply endorsement of the products or services advertised.

Printed in UK by: **Pensord Press**

ISSN: 0953-9204

Online ISSN: 2049-3320 © MA Business 2021



When you have finished with  
this magazine please recycle it.

# CBI survey finds manufacturing growth eases

Manufacturing output growth in the three months to August eased from last month's record pace, but remained firm by historical standards. However, stock adequacy weakened to a new survey-record low for the third consecutive month, according to the latest monthly CBI Industrial Trends Survey.

The survey of 262 manufacturers found output increased in 13 of out 17 sectors, with growth mostly driven by the food, drink & tobacco sub-sector. The easing in headline output growth compared to last month was driven primarily by the motor vehicles sub-sector, which saw output go from rising a near-record pace to being flat. Looking ahead to the next three months, manufacturers expect output growth to pick up slightly.

Total order books remained strong, at a broadly similar position to last month. Meanwhile, export



order books weakened somewhat from last month but still sit broadly in line with their long-run average.

Manufacturers also reported stock adequacy worsened to its weakest on record (since April 1977), marking the third month in a row in which a new record-low outturn has been set. The weakness in stock adequacy was driven by the electronic engineering and plastic products sub-sectors.

In addition, expectations for output price growth over the next three months remained strong, close to the near-30 year high seen

in June.

CBI lead economist Alpesh Paleja said: "Manufacturing activity remained strong this month, with total order books remaining firm and most sub-sectors reporting rising output. However, early signs from the data suggest that growth in activity may have peaked.

"It is notable that stock adequacy deteriorated to a new record low for the third consecutive month. Many firms are feeling the pinch from ongoing supply chain disruption, which also partly explains the continued strength in pricing pressures.

"Despite the rebound in activity, ongoing disruptions could choke off future manufacturing growth. It's vital businesses and the government continue to work together to smooth over some of the frictions in supply chains and the wider sector, until activity settles down to normal levels."

## UK consortium to develop prototype solid-state batteries

A consortium of seven UK-based organisations has signed a memorandum of understanding to combine ambitions to develop world-leading prototype solid-state battery (SBB) technology, targeting automotive applications.

Solid-state batteries offer significant potential advantages over conventional lithium-ion batteries and could be transformational in meeting the UK's net-zero commitments through the electrification of transport.

The successful outcome of the collaboration would be to harness and industrialise UK academic capability to produce cells using highly scalable manufacturing techniques that leapfrog the cost-effectiveness and performance achieved elsewhere.

The consortium comprises of the

Faraday Institution, Britishvolt, E+R (Emerson & Renwick), Johnson Matthey, Oxford University, UK Battery Industrialisation Centre and WMG, University of Warwick.

The preliminary design for a prototyping facility has been developed. Sources of funding are currently being sought.

Minister for Investment Lord Grimstone said: "Collaboration between industry, government and our world-leading academic institutions is putting the UK at the forefront of global efforts to develop innovative automotive technologies, such as solid-state batteries."

The Faraday Institution forecasts that, in 2030, SSBs are likely to take a 7% share of the global consumer electronics battery market and a 4% share of the EV battery market.

## UK car production falls

UK car manufacturing output fell 37.6% in July, the first fall since February, with just 53,438 units made, according to the latest figures released by the Society of Motor Manufacturers and Traders (SMMT).

The SMMT said it was the worst July performance since 1956 as manufacturers "grappled with the global shortage of semiconductors and staff absence resulting from the 'pingdemic'".

In July, production for the UK market fell 38.7% to 8,233 while manufacturing for export also fell 37.4% with 45,205 cars shipped overseas. Exports made up 84.6% of vehicles built and 26% were either battery electric (BEV), plug in hybrid (PHEV) or hybrid electric (HEV).



**Our biggest online range ever!**  
**Over 700 machines & accessories**  
**with FREE Delivery.\***



## Drills

### **OptiDrill**

Pro Pillar Drill D26



## Mills

### **Turret Mills**

Excel Turret Mill ETM 2VS



## Saws

### **Optimum**

Large Pull Down Saw S350DG



## Grinders

### **Metallkraft**

Metal-belt Sander MBSM 150-20 AS



## Lathes

### **OPTiturn**

Center and spindle lathe  
TH 4210D



## Wood Working

### **Holzkraft**

Edge sanding machine  
KSO 1500 F

**Shop our huge range of machines and accessories online.**

Call us on: Tel: +44 (0)24 7636 5255

Email: [sales@excelmachinetools.co.uk](mailto:sales@excelmachinetools.co.uk) Ring us or email to order!

You can now buy online at [www.excelmachinetools.co.uk](http://www.excelmachinetools.co.uk)

Colliery Lane, Exhall, Coventry, United Kingdom, CV79NW

(\*Mainland UK Only Excludes Highlands & Islands, in stock items only)



## briefs

### Matsuura partners up

Matsuura Machinery has signed a reseller partnership with leading 3D printer manufacturer, Desktop Metal.

This development the company said further cements Matsuura's position as one of the UK's technical centres of excellence for additive manufacturing technology, its industrial applications and profitable deployment with UK manufacturers.

Matsuura UK managing director Roger Howkins said: "Our partnership with Desktop Metal further enhances and complements our existing 3D printer product range, giving customers an even greater choice."

"Our experience and knowledge in the additive manufacturing sector spans many years, so customers looking to explore this market can expect to receive high levels of support from our additive team."

Desktop Metal sales manager Paul Gately added: "By combining the power of the Desktop Metal's portfolio of Additive Manufacturing solutions, with Matsuura's expertise in CNC machining, 3D printing and hybrid products such as the LUMEX Series, this partnership affords Desktop Metal superb visibility in UK & Ireland markets. "Partnering with Matsuura delivers Desktop Metal products direct access to premier CNC machining companies that could benefit enormously."

As an introduction to the brand, Matsuura will exhibit 3D printing machines at TCT3Sixty on stand D11 at the NEC from 28-30 September 2021. They will include EnvisionTEC Extreme 8K - the largest capacity production-grade DLP 3D-printer in the world.

## Sandvik Coromant starts work on new UK HQ

Work commenced in July on a new UK facility for metal cutting firm Sandvik Coromant and it is forecasted to open sometime in the summer of 2022.

Having been based in Halesowen since 1958, the historical building is now undergoing a revival and will be demolished and transformed into a new landmark UK headquarters.

In addition to housing the company's employees, the facility will act as a hub for manufacturing innovation and customer interactions, forming part of the Sandvik Coromant Centre global network.

Located in the West Midlands, the Halesowen site is in the heart of British manufacturing. Surrounded by a mass of original equipment manufacturers (OEMs) and supply chain firms, the West Midlands is the UK's most active advanced engineering and manufacturing cluster, supporting 14% of the country's entire advanced engineering workforce.

The company was the first in the cutting tool industry to introduce application centres and, currently,



there are 17 Sandvik Coromant Centres located across Europe, the Americas and Asia.

The centres give customers the opportunity to get hands-on involvement and training with state-of-the-art machines, measure the return on investment of their projects and gain knowledge from the company's yellow coat experts.

The showroom will host customer events and technology demonstrations, UK businesses will be able to visit the centre and receive hands-on access to world-leading knowledge in cutting metal and working with machine tools.

The Halesowen site will provide a high-tech working space for the

company's UK employees. With flexible, hot desking space for 100 office-based workers, the site boasts an eco-conscious design. Key features include the installation of solar panels and 26 electric vehicle (EV) charging points, with the capacity to offer EV charging for all 130 parking spaces in the future.

"The facility revamp has been a long time coming," said David Harbon, UK sales director at Sandvik Coromant. "While we found our current space was no longer suitable for our needs, this new facility will be fully future-proofed."

He adds the ambition is to create a "true innovation hub for metal cutting in the UK".

## New Battista hits the open road in California

The world's first pure-electric hyper GT, the Automobili Pininfarina Battista, has made its dynamic debut in production form on the roads of California.

As part of a packed programme of events around Monterey Car Week, the Battista's first road outing marked the beginning of a new chapter in the Italian manufacturer.

The debut of the Battista gave US clients a first chance to experience its 1,900 hp performance and to take in its striking bodywork - crafted at Automobili Pininfarina's manufacturing facility in

Cambiano, Italy, and created under a bespoke programme.

Chief product and engineering officer Paolo Dellachà said: "The Battista will provide a thrilling all-round experience on road and track - in the city and on the open road. To see the first production-intent example of our pure-electric hyper GT on the highways of California signals the beginning of an exciting new chapter in its development. This is a significant landmark and hugely rewarding moment as we count



The Automobili Pininfarina Battista

down towards making the first client deliveries later this year."

The hyper GT is the realisation of Battista's dream to see a car produced wearing the Pininfarina name with the first vehicles scheduled to be delivered to customers later this year.





Wall Colmonoy has seen increased demand

## £600k casting facility upgrade completed

Wall Colmonoy has completed a £600,000 upgrade to its casting facility in Pontardawe, Wales.

The investment modernises Wall Colmonoy's casting foundry, reducing its environmental footprint and improving its efficiency. The casting facility investment is partly supported by Welsh and European funding with a £150,000 contribution from the Economy Futures Fund.

The casting upgrade includes new induction melting equipment and magnetically screened furnaces. The new furnaces offer increased capacity and reduced processing times, due to improved reliability and reduced downtime. The upgrade

also incorporates better controls on pouring practices with data-driven monitoring sensors and software.

With the disruption of global supply chains following the pandemic, the firm has seen increased demand from EU and UK customers for its engineered cast or fully machined components. The foundry supports multiple casting methods across different industries.

This upgrade forms part of a strategic investment program. This has included new advanced measuring systems, upgraded machinery, such as a new Hurco 5-axis milling machine and a Desktop Metal Shop System for additive manufacturing.

## PTC to digitally transform the MTC

Top digital transformation company PTC, has signed a new partnership with the Manufacturing Technology Centre (MTC) that will help industry embrace the latest technologies.

The firm employs over 200 people in the UK, has become a Tier 2 member at the MTC and, as part of the agreement, will commit to providing the latest augmented reality, IIoT platforms, product lifecycle management and CAD solutions to projects designed to equip OEMs and SMEs with more digital capability.

This means proven sector solutions, including Vuforia, Thingworx, Windchill and Creo software, will all be available for

experts at the Coventry-based centre to use to accelerate product and service innovation, improve operational efficiency, and increase workforce productivity.

It marks the latest step in a six-year relationship that has already seen the two work together to deliver VIVAR (Virtual Instruction Inspection and Verification using Augmented Reality).

The organisations are now planning collaboration across the MTC's Core Research Programmes, increasing access to PTC's Industry 4.0 technologies for UK manufacturers, via the Smart Factory Innovation Hub and other key initiatives.

## briefs

**Following the success of their open house in May, Bystronic UK is preparing to host their next event in September.**

The event will showcase the latest features available on the Bystronic equipment and offer technology for a whole range of companies.

From small 40-ton stand-alone pressbrakes to a fully automated loading/unloading storage system and laser cutting technology, these will all be demonstrated at their facility in Coventry.

The event will allow the visitors to learn how the latest machine features can improve their production throughput and increase efficiencies, all without increasing manpower.

Bystronic will also have a guest speaker from Interroll Group presenting their new smart pallet mover. The pallet management solution for automating pallet transport in the vicinity of manufacturing machines and for production-related pallet management automation for the firm's customers and users.

Visit their website at [www.bystronic.co.uk](http://www.bystronic.co.uk) to book a spot.

**Five degree apprentices from Gloucestershire-based global engineering company, Renishaw, have been awarded second place for their entry in the UK's Engineering without Borders competition.**

As part of the Engineering for People Design Challenge the apprentices were challenged to create an engineering brief based on real-world problems that would improve the lives of the people living in two towns in northern Peru.

The Renishaw engineers, who are studying for their degrees at the University of the West of England, Bristol, developed a solution for Lobitos and Piedritas, two towns that experience serious sanitation problems.

The apprentices' solution consisted of a combination of biogasifiers and oxidation ponds, that plumbs sewage through the system, creating a sanitary sewage system and turns waste into usable by-products.

The innovative system breaks sewage into clear effluent that can be processed and used for drinking water and sludge that can be used for fertiliser, providing a healthier area to live.

The team comprised of Ella Brisland, Marcus Evans, Charlie Lodge, Ezra Price and Oliver Tutton, are currently in year one of a five-year Level 6 apprenticeship at Renishaw, in disciplines such as mechanical engineering, application support and design and development.







### A Mazak Production Cell

Comprising of 3 Mazak variaxis CNC machining centres with Mazatrol 640M 5X Control & Mazatrol Pallettech 30 Pallet FMS Manufacturing Cell.

### APEX AUCTIONS

[www.apexauctions.co.uk](http://www.apexauctions.co.uk)

T: 01273 224466 E: [info@apexauctions.co.uk](mailto:info@apexauctions.co.uk)



**Tuscan Heavy duty CNC lathe LC34x 4m immediately available.**  
Distance between centres - 4150mm  
Spindle bore - 230mm  
Available for demonstration or delivery  
Free UK delivery, commissioning, training and warranty.  
Contact us for overseas sale.

### AXE & STATUS

[www.axestatus.com](http://www.axestatus.com)

T: 01908 647707 E: [sales@axestatus.com](mailto:sales@axestatus.com)



### Ex Demo XYZ 750 LR VMC

- Siemens 828 with 10.4in Display
- Siemens 18HP Spindle Motor
- 5 - 8,000rpm (12,000rpm Optional)
- 750mm X 440mm X 500mm Travels (X,Y,Z)
- 24 Station Arm Type Tool Changer

### XYZ MACHINE TOOLS

[www.xyzmachinetools.com](http://www.xyzmachinetools.com)

T: 01823 674200 E: [sales@xyzmachinetools.com](mailto:sales@xyzmachinetools.com)



### Used 2019 XYZ RLX 425 X 2M CNC Lathe

- ProtoTRAK RLX Touchscreen Control
- EPA (Enhanced ProtoTRAK Assistance)
- 480mm Swing over bed (700mm in Gap)
- 257mm Swing over the cross slide
- 2,000mm Between Centres
- 80mm Spindle Bore
- 250mm 3 Jaw Chuck D1-8 Camlock
- 10HP Spindle with 25 - 2,500 RPM CSS (3 Speed Gearbox)

### XYZ MACHINE TOOLS

[www.xyzmachinetools.com](http://www.xyzmachinetools.com)

T: 01823 674200 E: [sales@xyzmachinetools.com](mailto:sales@xyzmachinetools.com)



### New XYZ RLX 555 X 1.75m CNC Lathe

- ProtoTRAK RLX Touchscreen Control
- EPA (Enhanced ProtoTRAK Assistance)
- 560mm Swing over bed (780mm in Gap)
- 350mm Swing over the cross slide
- 1,750mm Between Centres
- 104mm Spindle Bore
- 300mm 3 Jaw Chuck D1-11 Camlock
- 15HP Spindle with 30 - 1,800 RPM CSS (2 Speed Gearbox)

### XYZ MACHINE TOOLS

[www.xyzmachinetools.com](http://www.xyzmachinetools.com)

T: 01823 674200 E: [sales@xyzmachinetools.com](mailto:sales@xyzmachinetools.com)



### HARRISON ALPHA PLUS 550S X 3000MM

CNC/Manual Gap Bed Lathe, (2000), GE/FANUC Alpha 21-iT Control, 554mm Swing x 3000mm, Spindle bore 104mm, PARAT High accuracy Q.C.T.P., 3 & 4 Jaw chucks, 3 point steady, Great condition.

### RON THOMPSON MACHINERY

[www.ronthompsonmachinery.co.uk](http://www.ronthompsonmachinery.co.uk)

T: 01564 773351 E: [sales@ronthompsonmachinery.co.uk](mailto:sales@ronthompsonmachinery.co.uk)



### J & S / ANDMAR 618

Electronic surface grinder with Dust extraction

### BLUE DIAMOND MACHINE TOOLS

[www.bluediamondmachinetools.co.uk](http://www.bluediamondmachinetools.co.uk)

T: 01388 776052 E: [info@bluediamondmachinetools.co.uk](mailto:info@bluediamondmachinetools.co.uk)



### CHICAGO RIVET MACHINE MODEL 99

REFURBISHED IN 2017

POA

### INVENT LTD

[www.ii@inventltd.co.uk](http://www.ii@inventltd.co.uk)

T: 01535 600450 E: [ii@inventltd.co.uk](mailto:ii@inventltd.co.uk)

The classification index is used to organise the content of machines for sale this week, first by machine type and then, within each category, by size to make finding what you're looking for really efficient. In some categories, where appropriate, CNC machines are listed ahead of non-CNC machines.

Find even more machines online at

machineryclassified.co.uk

### Machines for Sale

0370 Drilling Machines,  
Radial

0390 EDM, Die Sink

0645 Grinders, Cylindrical,  
Universal

0705 Grinders, Other

0740 Grinders, Surface

0745 Grinders, Surface,  
Rotary Table

0800 Keyseaters

0825 Lathes, Centre, Gap  
Bed

0830 Lathes, Centre,  
Straight Bed

0835 Lathes, CNC Turning  
Centres

0900 Machine Tool,  
Accessories, Other

0920 Machining/Milling  
Centres, Vertical

0930 Marking/Engraving  
Machines

0945 Mills, Purpose/  
Component Specific

0947 Mills, Turret

0950 Mills, Universal

0955 Mills, Vertical

0980 Notching Machines,  
Angle

1060 Press Brakes

1227 Riveting Machines

1300 Saws, Band,  
Horizontal

1365 Shears, Guillotine

1450 Steelworkers

1580 Woodworking  
Machinery

### Machines Wanted

2000 Machinery Wanted

2005 Bearings Wanted

2110 Lathes Wanted

### Services

3260 Machine Tool

Advertisers featuring an 'E' symbol are members of the European Association of Machine Tool Merchants



**\*WANTED\***

ALL makes and models of CNC and conventional machine tools



Harrison V350 Gap Bed Centre Lathe  
Excellent Condition



XYZ Protturn 350 LX3 ProtoTRAK Control  
Excellent Condition



Hardinge HLV-H Precision Tool Room Lathe  
Supplied with Tooling Package



Bridgeport Turret Milling Machine 2 Axis DRO  
Re Ground Slideways



Fanuc Robodrill T14-1A Fanuc 16iM Control - 1999



XYZ 1500 3 Axis AGE ProtoTRAK CNC Turret Mill  
Excellent Condition

For more information on these products please call: 01384 633 968 or Email: sales@jetmachinery.co.uk



# MACHINERY CLASSIFIED

## SUPPLIER FOCUS

### REBUILD/REPAIR

**ROTATECH LTD**  
Spindle rebuilding and repair services  
20 Cavans Way, Binley Industrial Estate, Binley, Coventry CV3 2SF

Tel: 02476 452600  
Fax: 02476 452645  
web: www.rotatech.com  
email: sales@rotatech.com

## SPINDLE REBUILD AND REPAIR

### SPINDLE TYPES

- CNC Machining Centres
- CNC Lathes
- Grinders
- Boring Heads
- Head Stocks
- Tail Stocks
- Conventional Machine Tools etc.



### SHEET METAL



**Your UK Sheet metal & fabrication machine dealer**

**WE ARE ALWAYS  
LOOKING FOR USED  
MACHINES!**

W: [www.cjmach.co.uk](http://www.cjmach.co.uk)  
E: [clarencejones1@btconnect.com](mailto:clarencejones1@btconnect.com)  
T: 01706 876316

### SPARES & SERVICING

## EMI-MEC

- Machines
- Servicing
- Spares
- Tooling

01384-569821  
[sales@emi-mec.eu](mailto:sales@emi-mec.eu)  
[www.emi-mec.eu](http://www.emi-mec.eu)

### 0370 Drilling Machines, Radial

#### Non-CNC



**ARBOGA COMPACT 4MT RADIAL**, Ex-university hospital clinical engineering department, table 500x600mm Spindle speeds 80-890rpm, spindle to column 620mm, condition A1. Email: [sales@wilsonmachinery.co.uk](mailto:sales@wilsonmachinery.co.uk)

Tel: 01245 221200

[www.wilsonmachinery.co.uk](http://www.wilsonmachinery.co.uk)



**ASQUITH OD1 MK2 16/72 6FT Radial Arm Drill**, 5mt Spindle, Spindle speeds 8-1000 rpm. C/w Box Table Insta Brake. EPOA Email: [phil@philgeesinmachinery.co.uk](mailto:phil@philgeesinmachinery.co.uk)

Tel: 0114 279 7619

[www.philgeesinmachinery.co.uk](http://www.philgeesinmachinery.co.uk)



**Asquith Power Thrust 4PT 14-54**  
Email: [sales@bdmttools.co.uk](mailto:sales@bdmttools.co.uk)

Tel: 01388 776052

[www.bluediamondmachinetools.co.uk](http://www.bluediamondmachinetools.co.uk)



**KITCHEN & WALKER KVM 50-1250 elevating column radial arm drill** Ref nos 3222/190, max distance between spindle and slideway guides 1250mm, spindle speeds 28 to 2500rpm, power feeder, slotted box table size 1000 x 750 x 450mm, with auto stop brake. Email: [sales@wilsonmachinery.co.uk](mailto:sales@wilsonmachinery.co.uk)

Tel: 01245 221200

[www.wilsonmachinery.co.uk](http://www.wilsonmachinery.co.uk)

## NEED HELP SELLING A MACHINE?

Call us on **01322 221 144** to discuss a customised marketing campaign.



**MONSTANA 2A554 RADIAL DRILL**. MOSTANA 2A554, 1996, ARM LENGTH 2000.0 mm, MAXIMUM DRILLING DIAMETER: 63.0 mm, SPINDLE TAPER 5 MT, SPINDLE TRAVEL 356 mm, SPINDLE SPEED: 40 - 2040 RPM, SPINDLE MOTOR: 5.5 HP / 4.1 Kw, CLEAN TABLE, INSTA BRAKE. Email: [enquiries@machsell.co.uk](mailto:enquiries@machsell.co.uk)

Tel: 0121 708 2255

[www.machsell.co.uk](http://www.machsell.co.uk)

### 0390 EDM, Die Sink

#### CNC



**HURCO 425 MARK 2 EDM Spark Eroder**, 25 Amp Generator, Tank size 450 x 320mm, XYZ travels 260 x 130 x 220 + 152mm, System 3R toolholder, DRO, checked over and serviced. Email: [sales@ronthompsonmachinery.co.uk](mailto:sales@ronthompsonmachinery.co.uk)

Tel: 01564 773351

[www.ronthompsonmachinery.co.uk](http://www.ronthompsonmachinery.co.uk)



### EDM Sales & Services

Tel: +44 (0)1594 826779  
Email: [sales@edm.co.uk](mailto:sales@edm.co.uk)

Supplier of fully refurbished Wire & Die Sink EDM machines.

Specialists in Charmilles & Fanuc.

More than 10,000 spares/ parts in stock.



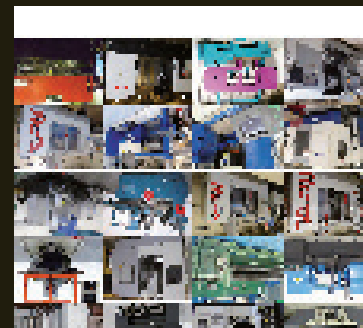
Charmilles Robofil 240cc



Charmilles Roboform 31

[www.edm.co.uk](http://www.edm.co.uk)

## The Online Market Place for New and Used Machine Tools



www. **MACHINERY  
CLASSIFIED** .co.uk



**0645 Grinders, Cylindrical, Universal**

Non-CNC



**Jones & Shipman 1302 EIU 2 Cylindrical and Internal Grinder**, Maximum Swing 14" x 27", between Centres, Steadies, 3-Point and 2-Point, Mag chuck, 3 Jaw Chuck, Radius Dresser, Faceplate, Coolant, Wheel arbours  
Email: sales@wilsonmachinery.co.uk

Tel: 01245 221200

www.wilsonmachinery.co.uk

**0740 Grinders, Surface**

Non-CNC



**JAKOBSEN SJ16 Hydraulic Surface grinder**, Capacity 800 X 300 mm Magnetic chuck 750 x 250 mm C/w Power rise & fall with incremental down feed  
Email: phil@philgeesinmachinery.co.uk

Tel: 0114 279 7619

www.philgeesinmachinery.co.uk



**OKAMOTO ACC 63DX SURFACE GRINDING MACHINE. OKAMOTO ACC 63DX**, 2002, AUTOMATIC, TABLE SIZE 600 x 300 mm, TRAVERSES: 750 x 340 mm. VERTICAL HEIGHT READ OUT DISPLAY, CROSS TRAVEL READ OUT DISPLAY, AUTOMATIC DOWN FEED HYDRAULIC MOVEMENT, COOLANT SYSTEM, 250.0 x 600.0 mm ELECTRO MAGNETIC CHUCK, MACHINE MANUALS  
Email: enquiries@machsell.co.uk

Tel: 0121 708 2255

www.machsell.co.uk

# MACHINERY CLASSIFIED

THOUSANDS OF MACHINES  
AVAILABLE ONLINE



**SEEDTEC YSG-618AHR Surface Grinder**, (1993), Capacity 500 x 150mm, Travels 550 x 177mm, Magnetic chuck 340 x 150mm, Auto reversing saddle, Coolant and dust, Excellent condition. Email: sales@ronthompsonmachinery.co.uk

Tel: 01564 773351

www.ronthompsonmachinery.co.uk

# MACHINERY CLASSIFIED

www.machineryclassified.co.uk

**0705 Grinders, Other**

**HUNTON SWING GRINDERS - MAJOR MODEL** Large capacity up to 'E' station Amada and Wiedemann Trumpf + all Strippit Tooling, Dry or with coolant. KEEP THE EDGE ON YOUR TOOLS + SHEAR BIGGER CAPACITY FOR ALL SIZES OF PUNCHES AND DIES.  
Email: sales@mjallen.co.uk

Tel: 01233 631554

www.mjallen.co.uk

**0740 Grinders, Surface**

Non-CNC



**J & S / Andmar 618 Electronic surface grinder** with Dust extraction  
Email: sales@bdttools.co.uk

Tel: 01388 776052 www.bluediamondmachinetools.co.uk

**0745 Grinders, Surface, Rotary Table**

Non-CNC

## PENICO GAUGES LTD

### PENICO ROTARY GRINDING TABLE

- Converts surface grinders to rotary work
- Robust construction
- Manufactured in the UK



For further details contact  
**Penico Gauges Ltd**

Tel: +44(0)1274 511 044  
info@penico.com

Fax: +44(0)1274 510 770  
www.penico.com

# NEED HELP SELLING A MACHINE?

Call us on **01322 221 144** to discuss a customised marketing campaign.

## NEED HELP SELLING A MACHINE?

Call us on **01322 221 144** to discuss a customised marketing campaign.

# Great deals on new and used machine tools - every day...every week...every month!



Leadwell V-40 VMC with Fanuc control, 8,000RPM spindle & Nikken 4th axis head. YOM 2006



Spinner U5-1520 5-Axis Machining Centre with Heidenhain TNC630 control

12,000RPM, 54-tool ATC, high pressure TSC, swarf management, tool setter, 1.5m bed with integrated 4-5-axis table. YOM 2012. Immaculate!



Dugard SS1263L VMC with Heidenhain i530 control 12,000RPM direct-drive spindle, thru coolant, 1,200kg sd table load. YOM 2015



Okamoto Grind-X ACC64CA-iQ CNC Surface Grinder. Only used as a demo machine and stored since! Just received. YOM 2010



## CHOICE OF 2

Cincinnati Lamb CFV 800i with Heidenhain i530 control, 30-tool ATC, Nikken 4th axis, 12,000RPM spindle with through coolant. YOM 2008



Hurco VMX60m with WinMax control, 10,000 RPM spindle, thru coolant, swarf conveyor. YOM 2011



Hardinge Talent 645-SV with Fanuc control, 6" chuck, 42mm spindle. Immaculate! YOM 2006



Hardinge Talent 6/45 LTC Fanuc control, driven tools & C axis, 6" chuck, tailstock, parts catcher, tooling. YOM 2007



Hardinge Bridgeport XV 710 with Siemens 810D control & Shopmill, 8,000RPM BT40 spindle. Immaculate! YOM 2007



## CHOICE OF 3

Hardinge Bridgeport XR 1000 with Heidenhain i530 control, 12,000RPM direct-drive spindle, thru coolant, 4th axis probing. YOM 2010



Hardinge Bridgeport XR 760 with Heidenhain i530 control, 12,000RPM direct-drive spindle, thru coolant, 4th axis probing. YOM 2008



Hardinge VMC 800 Sr II with Fanuc 0i control, 8,000RPM, 20-tool ATC. YOM 2003



Hwacheon Hi-Tech 200Ai with Fanuc control, 8" chuck, tailstock, parts catcher, removable tool probe. YOM 2005



Colchester T8M with Fanuc control, driven tools, C-axis, tailstock & tooling YOM 2008



Colchester T8 CNC Lathe with Fanuc control, 210mm dia chuck, 77.5mm bore, parts catcher & swarf conveyor. YOM 2008



Samsung PL20A-500 2-Axis CNC with 8" chuck, tailstock, parts catcher, tool probe, swarf conveyor. YOM 2011

Bristol showroom:

Units 1-3 Chapel Lane, Clay Hill,  
Fishponds, Bristol BS5 7EY

NEW Leicester showroom:

Unit F5 Waterside Road, Hamilton Industrial Park,  
Leicester LE5 1TL



Bristol showroom:  
0117 965 2706

**NEW** Leicester showroom:  
0116 246 0066



Mazak VTC 300-C Travelling Column VMC with Mazatrol PC Fusion control, 12,000RPM spindle. YOM 2004



YCM FX 350A 5-Axis Machining Centre with Heidenhain i530 control, 12,000RPM, thru coolant, 60-tool ATC, glass scales & probing. YOM 2012



Quaser MF500-C 5-Axis Trunnion Style VMC with Siemens 828D control, 12,000 RPM, 30 tools. Immaculate! YOM 2012



Haas VF2 with 21-tool ATC, 10,000RPM spindle, swarf auger. Mint! YOM 2008



Haas VF4, 1,270mm x 508mm x 635mm movements, 8,100RPM, swarf auger. YOM 2007



Haas TL2 with quick change tool post and holders, 8" 3-jaw chuck, coolant. YOM 2014. As new!



Haas SL10 with parts catcher and swarf auger, fitted with Haas Servo 300 bar feed. YOM 2004



**CHOICE OF 2**

XYZ VMC 710 with Siemens 828D control, 24-tool side-mount ATC, 8,000RPM. 2010 & 2014



XYZ 2 OP portable VMC with ProtoTrak control, 8-tool ATC & tooling. YOM 2016



XYZ SLX 555 x 1m with 12" chuck, 104mm spindle bore. Immaculate! YOM 2012



**CHOICE OF 2**

XYZ SLX 1630 with 3- & 4-jaw chucks, travelling & fixed steadies. Immaculate! YOM 2012



XYZ SLX 425 x 1250 with ProtoTrak SLX control, 3- & 4-jaw chucks, quick change tool post. YOM 2015



**CHOICE OF 2**

XYZ SMX 2000-2 with R8 spindle, power draw bar, DXF file reader and table guards. YOM 2016



XYZ SMX 3000-3 with 3-Axis ProtoTrak SMX control, vari-speed head, ISO 40 spindle. YOM 2008



**CHOICE OF 2**

XYZ SMX 3500 with ProtoTrak SMX control, electronic handwheels, Traking & power drawbar. YOM 2013



**CHOICE OF 3**

XYZ SMX 4000 with ProtoTrak SMX control, programmable spindle speeds, Traking, electronic handwheels & power. YOM 2012

Email: [info@machinetoolsalesonline.com](mailto:info@machinetoolsalesonline.com)  
[www.machinetoolsalesonline.com](http://www.machinetoolsalesonline.com)

Machine Tool Sales  
**online**

Suppliers and  
buyers of new and used  
machine tools.



**0800 Keyseaters**
**Non-CNC**


**Fromag 63/425 Keyseater** Width 63 mm, Stroke 425 mm,  
Pendant Control £POA  
Email: phil@philgeesinmachinery.co.uk

Tel: 0114 279 7619 www.philgeesinmachinery.co.uk

**NEED HELP SELLING A MACHINE?**

Call us on **01322 221 144** to  
discuss a customised marketing campaign.

**0825 Lathes, Centre, Gap Bed**
**Non-CNC**


**HARRISON M400** Gap bed centre lathe Swing 410 mm x 1000  
mm b.c/w 3/4 jaw chuck & Coolant  
Email: phil@philgeesinmachinery.co.uk

Tel: 0114 279 7619 www.philgeesinmachinery.co.uk



**COLCHESTER MASTIFF 1400** 535X2500MM, GAP BED 90  
MM SPINDLE BORE 18-1400RPM, EQUIPMENT  
Email: sales@wilsonmachinery.co.uk

Tel: 01245 221200 www.wilsonmachinery.co.uk



**COLCHESTER TRIUMPH 2000-50" MARKII** GAP BED LATHE,  
3 JAW, 4 JAW, QUICK CHANGE TOOLPOST.  
Email: sales@wilsonmachinery.co.uk

Tel: 01245 221200 www.wilsonmachinery.co.uk



**Colchester triumph VS2500** Email: sales@bdttools.co.uk

Tel: 01388 776052 www.bluediamondmachinetools.co.uk



**EXCEL MODEL XL40** year 1996, 1000MM SWING X 3000MM  
, SWING OVER CROSS SLIDE 740MM, GAP BED, STEADIES  
, CHUCKS 8-1000RPM,  
Email: sales@wilsonmachinery.co.uk

Tel: 01245 221200 www.wilsonmachinery.co.uk



**COLCHESTER TRIUMPH 2000** 390mm swing x 1250mm  
b.c., NEW D.R.O., Q.C.T.P., 3-Jaw chucks, 3 point steady,  
Sliding chuck guard, Excellent condition.  
Email: sales@ronthompsonmachinery.co.uk

Tel: 01564 773351 www.ronthompsonmachinery.co.uk



**HARRISON M460 (12351) x 2000mm GAP BED CENTRE  
LATHE 3" Spindle Bore** : 16 Speeds 20 - 1600 rpm : 3 & 4 Jaw  
Chucks : QCTP & Holders : Newall 2 Axis DRO : Fixed Steady :  
Coolant : Chuck & Splash Guards. YOM 1996.POA  
Email: info@bwmachinetools.co.uk

Tel: 0116 288 6070 www.bwmachinetools.co.uk



**COLCHESTER TRIUMPH 2000 (12430)** 15" x 50" GAP BED  
CENTRE LATHE 2" Spindle Bore : 16 Speeds 25 - 2000 rpm  
: QCTP & Holders : 3 & 4 Jaw Chucks : Anilam 2 Axis DRO :  
Coolant : Chuck & Splash Guards. POA  
Email: info@bwmachinetools.co.uk

Tel: 0116 288 6070 www.bwmachinetools.co.uk



**COLCHESTER TRIUMPH 2000** Swing 390 x 1250 mm C/w 3 &  
4 jaw Chucks Fixed Steady, Quick Change tool-post  
Email: phil@philgeesinmachinery.co.uk

Tel: 0114 279 7619 www.philgeesinmachinery.co.uk



**Gate-G-330E Centre Lathe** Ex-College, 330mm swing x  
1M, 3 & 4- Jaw Chucks, Steadies, QCTP with 4 holders, light,  
Coolant, interlocked guards, Set of change gears, Excellent  
Condition, 2 available GMU-064 & 066  
Email: sales@gatemachinery.com

Tel: 01923 211000 www.gatemachinery.com



**COLCHESTER MASCOT 1600 (12470)** 17" x 60" GAP BED  
CENTRE LATHE 3" Spindle Bore : 16 Speeds 20 - 1600 rpm :  
3 & 4 Jaw Chucks : QCTP & Holders : Fixed Steady : Low Volt  
Light : Coolant : Chuck & Splash Guard. POA  
Email: info@bwmachinetools.co.uk

Tel: 0116 288 6070 www.bwmachinetools.co.uk



**Gate-G-430TX Centre Lathe** 430mm swing x 1.5M, Fagor  
20IT DRO, Bison 3 & 4-Jaw Chucks, Steadies, 'Multifix'  
QCTP with 4 holders, light, Coolant, interlocked guards, 2017  
machine in Superb Condition, GMU-074.  
Email: sales@gatemachinery.com

Tel: 01923 211000 www.gatemachinery.com



**Harrison model 390** swing over bed 400mm x 1250mm ,gap  
bed ,25-2000rpm .full equipment and dro  
Email: sales@wilsonmachinery.co.uk

Tel: 01245 221200 www.wilsonmachinery.co.uk



# Nobilla Machine Tools: Colchester Lathe Specialists

[www.nobilla.co.uk](http://www.nobilla.co.uk)

Tel: 01438 812409 Mobile: 07940 894982

Email: [simon@nobilla.co.uk](mailto:simon@nobilla.co.uk)

**REDUNDANT STOCK WANTED**

**Nobilla Machine Tools Ltd (1980)**



**Colchester Triumph 2000 x 50" gap bed imp.** S/n# 6/0044/35018DD (Ex-Pfizer Corporation).....POA. C/w 3&4 jaw chucks, Q'change Toolpost & 4off holders, faceplate, bedstop & coolant. Excellent slides & headstock with original paintwork. Three months parts warranty with this lathe. Extra accessories available: DRO, Ainjest, Copy unit, etc.....Ref 11.



**Colchester Magnum 1250 x 3m Gap bed lathe** £17,500+vat  
C/w 3 & 4 jaw chucks, one axis dro, light & heavy duty steadies, Travelling steady, Q'change toolpost & holders, Taper turner, lots of extra tooling. Quiet headstock & good slides. Rapid feed button needs replacing. This lathe can be seen under power at a client's workshop.



**Mastiff 1400 x 120" Met gap bed**

Serial # LMF12 GMRJH/07124 - £12,750+vat

C/w 3 & 4 jaw chucks, Two axis Acu-rite dro, Q'change toolpost & holders, Heavy duty fixed steady, Taper turner, Lo-vo-lite, bedstop. Good head & slideways. Warranty.



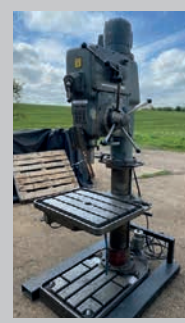
**Ajax Cleveland 2U Universal mill in Excellent condition.....POA**

Cleared from Duxford War museum maintenance shop. Unfortunately the arbors & supports were thrown away. This mill is as new! We can fit a New Newall three axis dro for an extra £1000+vat.



**Ex-MOD (Excellent) QS QDM 32 Pillar drill - Serial No. 2170-84** £2,750+vat

Ex- MOD Qualters & Smith in excellent condition. Geared head pedestal drill with automatic downfeed Lo-vo-lite, coolant and Insta-brake. Rack & pinion table elevation. Table swivel facility.



**Elliot SE Heavy Duty Drill with auto-down feed** £1500+vat  
Spindle Taper MT4  
9 speeds 58-839rpm. Varying auto downfeed speed. Rise and fall table & coolant. 440 x 640mm T Slot table. Good working condition.

**MASTIFF 1400 X 40" MET GAP BED**



**In Very good condition.....POA**  
C/w 3 & 4 jaw chucks, Two axis dro, Q'change toolpost & holders, Lo-vo-lite, bedstop. Original slideways very good & very good headstock.

**EXCELLENT MASCOT 1600 X 100" GAP IMP**



C/w 3 & 4 jaw chucks, Q'change toolpost & holders, Heavy duty steady, lo-vo-lite, Excellent slides & headstock. Original paint from new. Three months parts warranty. £POA

**ARRIVING SHORTLY**



**RICHMOND ENVOY RADIAL ARM DRILL** with instabrake. Ex-Aerospace £POA

**HARDINGE DSM59 SUPER-PRECISION**



Second operation capstan Lathe with Barfeed £POA

**Choice of two: Ex- MOD surplus Harrison M300 25" met gap bed lathe**



Excellent slides & headstock.....POA  
C/w 3 & 4 jaw chucks, Q'change toolpost & holders, bedstop, & coolant. Excellent slideways & headstock. Three months parts Warranty. Extra accessories available: DRO, Ainjest, Copy unit, etc.



**Student 1800 x 25" Ex-college**, straight bed C/w 3 & 4 jaw chucks, q'change toolpost & 4 off holders & coolant.....POA  
Very Good slides & headstock. Extra accessories available: DRO, Ainjest, Copy unit.

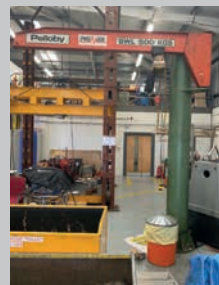
**ARRIVING MAY.....COLCHESTER TRIUMPH 2000 X 30" GAP BED IMP**



Serial #TR 30GIRHJ/38135(Ex-Pfizer Corporation).....POA  
C/w 3&4 jaw chucks, Q'change Toolpost & 4off holders, faceplate, bedstop & coolant. Excellent slides & headstock with original paintwork. Three months parts warranty with this lathe. Extra accessories available: DRO, Ainjest, Copy unit, etc.... Ref 10



**Heavy Duty Induma Vertical Mill.**  
Table 60" x 11". ISO 40int. Two axis Anilam dro. Variable speed head. Variable & Rapid feed to table. Coolant £2,500+VAT



**Pelloby 500kg electric hoist** Jib Crane in Very good condition. ....POA.

Length of movement of jib arm... 2.25m

Height under jib arm... 3m.



**EXTRA ACCESSORIES AVAILABLE: DRO, AINJEST, COPY UNIT, ETC.**

**KRV 3000 MILLING MACHINE** with quiet vari-speed head Acu-rite 3 Axis DRO, 40 Int Taper.....POA  
Lo- Vo-lite, longitudinal feed with rapid override. M/c vice. S/No. 7071.



**Ex-Campus College Triumph VS 2500 x 30" gap bed lathe in excellent condition** (Just dirty due to lack of use)

C/w 3 & 4 jaw chucks, chuck guard, Q/C toolpost & holders, Lo-Vo-Lite, coolant, bedstop. Extra accessories available: DRO, Ainjest, Copy unit, etc. £POA

**MEGA MACHINE BS300HAS FULLY AUTOMATIC HORIZONTAL BAND SAW**



Can feed in up to 3.5m of material in one session. Y.O.M 1996. Serial # 960222. £3,995+vat



**MASCOT 1600 X 40" STRAIGHT BED IMP. IN VERY GOOD CONDITION**

C/w 3 & 4 jaw chucks, New Newall Two axis dro, Q'change toolpost & holders, Lo-vo-lite, bedstop. Three months parts warranty. Original slideways very good & very good headstock £POA

**STARTRITE 316H VERTICAL BANDSAW IN EXCELLENT CONDITION:**



Horizontal / Vertical / Manual / Semi Aut Vertical  
Cutting Diameter (mm): 30" throat  
Dimensions Of Saw-Band (mm): 16mm  
Cutting Speed (M/S) 90-3600  
Main Drive Power (KW/V/Hz): 415v  
Feed: Hydraulic  
Welder: Yes

£POA



**0830 Lathes, Centre, Straight Bed****Non-CNC**

**Haas TL1 CNC lathe.** 2007, Hand wheels for manual control. Full Haas control. Visual programming system. Rigid Tapping. 8 inch manual chuck. Quick release toolpost. Hard jaws (ext and int) Tool holders. Full Haas manual. Coolant. Tailstock MT3, Great condition. Can be seen running. POA. Loading facilities available on collection. Email: mps.engineering@yahoo.com

Tel: 01262 678416



**SKODA MODEL SUA125P HEAVY DUTY UNIVERSAL CENTRE LATHE SWING OVER BED 1320 MM,** DISTANCE BETWEEN CENTRES 1100MM, YOM 1983 WITH SCREWCUTTING, SWINGT OVER CARRIAGE 950MM, 0.9-350RPM. MAIN MOTOR 45KW. Email: sales@wilsonmachinery.co.uk

Tel: 01245 221200

www.wilsonmachinery.co.uk



**SMART & BROWN MODEL 1024** Ex-university hospital clinical engineering department, 11" SWING, 24" BETWEEN CENTRES, SPINDLE SPEEDS 30-2500RPM WITH EQUIPMENT.

Email: sales@wilsonmachinery.co.uk

Tel: 01245 221200

www.wilsonmachinery.co.uk

**0835 Lathes, CNC Turning Centres**

**HARRISON ALPHA PLUS 550S x 3000mm CNC/Manual Gap Bed Lathe,** (2000), GE/FANUC Alpha 21-iT Control, 554mm Swing x 3000mm, Spindle bore 104mm, PARAT High accuracy Q.C.T.P., 3 & 4 Jaw chucks, 3 point steady, Great condition. Email: sales@ronthompsonmachinery.co.uk

Tel: 01564 773351

www.ronthompsonmachinery.co.uk

# MACHINERY CLASSIFIED



**HWACHEON HI TECH 300 CNC LATHE.** HWACHEON HI TECH 300, 2006, FANUC 18i-TB, CHUCK DIA: 300 mm, SPINDLE HOLE SIZE: 79 mm, TURRET: 12 STATIONS, FANUC MANUAL GUIDE I, TOOL PRESETTER, PARTS CATCHER, FULLY PROGRAMMABLE TAILSTOCK, GEARBOX MACHINE, SWARF CONVEYOR. Email: enquiries@machsell.co.uk

Tel: 0121 708 2255

www.machsell.co.uk



**MAIER PROLINE ML32 C2,** SWISS TYPE CNC LATHE. MAIER, PROLINE ML32 C2, 2008, FANUC 16i TB, 9 AXES LNS EXPRESS 332 FULL LENGTH MAGAZINE BARFEED, SWARF CONVEYOR, FULL SET OF MANUALS

Email: enquiries@machsell.co.uk

Tel: 0121 708 2255

www.machsell.co.uk



**MORI SEIKI SL-45MC-1500,** 3-AXIS HEAVY DUTY CNC LATHE. MORI SEIKI SL-45MC-1500, FANUC 15T WITH FAPT, LED SCREEN, CHUCK DIA: 400mm, BETWEEN CENTRES: 1700 mm; SPINDLE BORE: 120.0 mm; 4 SPEED GEARBOX NEW "SCHUNK" SMW QUICK CHANGE CHUCK, C-AXIS AND DRIVEN TOOLS HYDRAULIC STEADY, FULL SET OF MANUALS. VERY GOOD RANGE OF TOOLING, NEW SWARF CONVEYOR, IN EXCELLENT WORKING ORDER

Email: enquiries@machsell.co.uk

Tel: 0121 708 2255

www.machsell.co.uk



**PINACHIO ST180 X1000 CNC LATHE,** New 2015 Fanuc Oi-TD control, Swing 360 mm x 1000 mm, Spindle bore 42 mm, Speeds 0 4000rpm C/w 8 Station Turret, Tail stock

Email: phil@philgeesinmachinery.co.uk

Tel: 0114 279 7619

www.philgeesinmachinery.co.uk



**XYZ Protur VL 355** Complete with Protrak VL control

Email: sales@bdmtools.co.uk

Tel: 01388 776052

www.bluediamondmachinetools.co.uk

**0900 Machine Tool, Accessories, Other**

# GTS

Gate Tooling Services

**15% off all Stock**  
**VERTEX Tooling**

Visit our Web site for details

Tel: 01923 211000 www.gatetooling.co.uk

**0920 Machining/Milling Centres, Vertical**

**HARTFORD LG800 VERTICAL MACHINING CENTRE.**

**HARTFORD LG 800,** 2006, FANUC 21i MC, TRAVERSES (XYZ): 800 mm x 510 mm x 630 mm, MAX SPINDLE SPEED: 10,000 RPM, ATC: 24 STATIONS, SIDE ARM (DRUM TYPE), SWARF CONVEYOR, COOLANT FLUSHING DEVICE, SPINDLE AIR CURTAIN, SPINDLE OIL COOLER, PORTABLE CHIP BUCKET, OPERATORS MANUAL + FLOPPY

Email: enquiries@machsell.co.uk

Tel: 0121 708 2255

www.machsell.co.uk



**OKK PCV 55 HEAVY DUTY VERTICAL MACHINING CENTRE.**

**OKK PCV 55,** 1999, FANUC 18 MC, TRAVERSES (XYZ): 1016 x 600 x 550 mm SPINDLE SPEED UP TO 13,000 RPM, SPINDLE TAPER: BT 50, THROUGH SPINDLE COOLANT, 50 TAPER MACHINE, BOX GUIDEWAYS, TRANSFORMER, SWARF CONVEYOR, RIGID TAPPING, FULLY ENCLOSED GUARDING, FULL SET OF MANUALS - Email: enquiries@machsell.co.uk

Tel: 0121 708 2255

www.machsell.co.uk

**0930 Marking/Engraving Machines****CNC**

## ENGRAVING MACHINES BOUGHT AND SOLD

Computerised & Manual most makes.

Tel: 01992 899255 Fax: 01992 899256

Email: sales@ronamachines.co.uk

Web: www.ronamachines.co.uk

## NEED HELP SELLING A MACHINE?

Call us on **01322 221 144** to discuss a customised marketing campaign.



# STEVEN MOONEY

## M • A • C • H • I • N • E • R • Y

www.stevenmooneymachinery.co.uk  
For more information on these products please call one of our experts on:  
**+44 (0)1444 245414** or Email: **info@stevenmooneymachinery.co.uk**



**XYZ SLX 425 X 1.25 Lathe**

2018, Prototrak SLX Control, Swing 480mm, Centres 1,250mm, Traking, Constant Surface Speed, Qcpto, Spindle Bore 80mm, Power 7.5kw 10Hp, Tailstock.



**XYZ EDGE 1500**

2003, Prototrak EDGE 2 Axis Control with 3 axes dro, quillstar, R8 taper, table 1066 x 228mm, travel X 660, Y 330mm.



**XYZ SMX2500 Bed Mill**

2013, SMX Control, table 1245 x 228mm, 3HP head, R8 spindle taper, power drawbar, Features - Advanced Features, Network.



**XYZ SMX 5000 CNC Bed Mill**

2012, 40 int power drawbar, prog spindle speeds 40-5000rpm, 2 speed range, trav 1524 x 596 x 540mm, 5.75kw.



**XYZ ProtoTRAK 2-OP**

2017, Prototrak 3 axis CNC Control, Trav 355 x 305 x 455mm, 6000rpm, BT30, 8atc, 3hp, 3-phase power. Footprint 775 x 1,380 x 2,520mm tall.



**Mazak Variaxis 730-5X II**

2008, Mazak Matrix Control, 40 Station ATC, High pressure Coolant, Coolant through the spindle, 10,000RPM, Renishaw Probe interface, Swarf Management.



**Doosan DNM650**

2012, Heidenhain TNC530i, Trav 1270 x 670 x 625mm, 12000rpm, CAT40, 30atc, Swarf Conveyor.



**Hyundai Kia VX650/50**

2008, Fanuc 21i-MB, Travels X-1,400mm, Y-650 Z-635mm, Table 1,600 x 650mm, BT50 taper spindle, 6,000RPM, 24 ATC.



**Parpas 90HP/2000**

CNC Ram Style Machining Centre, rebuilt 2020, Unused since rebuild, Siemens 840Dsl control, Travel X 2,055, Y1,026, Z1,245mm, B axis travel 370 degrees, 185 degree/-185 degree, Spindle speed 8,000rpm, 30KW motor power.



**Mazak VTC800/30SR**

2014, Mazatrol Matrix 2 Control, table 3500 x 820mm, trav 3000 x 800 x 720mm, Spindle head rotation +/- 110 degrees, 48atc, CAT40.



**Dugard Eagle 100 CNC Lathe**

(Model FCL-140), 2007, Siemens802D sl control, Cutting dia 210mm, length 290mm, bar cap 45mm, 6,000rpm, 10 station turret, tailstock, Swarf conveyor.



**Colchester Tornado A50**

2001, Fanuc 21iTB, collet chuck, 12 station VDI 30 turret, turn dia x length 170 x 350mm, bar cap 42mm, No swarf conveyor, No tailstock.



**Nakamura WT150MMY**

2003, Fanuc 18i Control, opposed spindles, Twin turrets, 2 x 12 str, driven tooling x 2 turrets, Y-axis on upper turret, Max turn 400mm, Bar size 51mm dia, FMB 3 metre Bar Feeder.



**Joemars Model JM325DZ**

Small Hole Electrical Discharge Machine, 2005, Carmar SW 5000 Fuzzy Control, Table Size 460mm x 210mm, X & Y Travel 330mm x 200mm, Ram Servo Travel 345mm, Max Electrode Length 400mm, Electrode Size 0.3mm - 3mm.



**Grind-Rite Centreless Grinder**

Model 60-000, 2004, C/W 2 axis Acu-rite DR0, Optidress, Coolant.



**Mazak Quick Turn Nexus 100 - II MY**

2010, Mazatrol Matrix Nexus Control, 12 str turret, tailstock, swarf conveyor, Hydrafeed MX1B short mag bar feeder, 51mm bar cap.

**XYZ**  
Machine Tools  
Used Agent

**We are the Largest Suppliers of Used XYZ Machines in the country**  
**We are also the only Approved Used Dealer of XYZ Machines**

**XYZ**  
Machine Tools  
Used Agent



**0945 Mills, Purpose/Component Specific**



**HURTH KF32a Automatic Twin Spindle Spline Milling Machine**, Table size 1500 x 375mm, Horizontal travel of spindle head 400mm, Max. component length 550mm. Twin spindle index head, Hydraulic tailstocks, Arbor support, late machine. Email: sales@ronthompsonmachinery.co.uk

Tel: 01564 773351 [www.ronthompsonmachinery.co.uk](http://www.ronthompsonmachinery.co.uk)



**HARDINGE BRIDGEPORT Series 1 BR2J2, (2005)**, Table 48" x 9", Travels 36" x 12", R8 Spindle, 60-4200rpm, Acu-Rite 3 axis D.R.O., Power long feed, Very nice condition

Email: sales@ronthompsonmachinery.co.uk

Tel: 01564 773351 [www.ronthompsonmachinery.co.uk](http://www.ronthompsonmachinery.co.uk)

**0955 Mills, Vertical**

**CNC**



**HAAS Super VF 2 CNC Mill in Ex condition**  
Email: sales@bmdtools.co.uk

Tel: 01388 776052 [www.bluediamondmachinetools.co.uk](http://www.bluediamondmachinetools.co.uk)

**0947 Mills, Turret**

**CNC**



**TRYAX B5FC CNC BED MILL (12456)** Centroid M400 3 Axis CNC Control : 40 ISO Spindle with Programmable Speeds 40 - 4000 rpm : Table 52" x 11" : Traverses X - 850mm Y - 460mm Z - 510mm : Power Drawbar : Low Volt Light Coolant : Table Guards : Machine Manuals : Excellent - Ex - University Machine.POA

Email: info@bwmachinetools.co.uk

Tel: 0116 288 6070 [www.bwmachinetools.co.uk](http://www.bwmachinetools.co.uk)



**LILIAN 5VH Heavy Duty Turret Mill (2007)**, Table 1370 x 254mm, Travels 1016 x 445mm, 40 ISO Spindle, 50-3500rpm, 5 HP Vari Speed Head, Square knee slideways, Acu-Rite 3 axis D.R.O. Power long feed, Power rise and fall, Power drawbar, Very nice condition

Email: sales@ronthompsonmachinery.co.uk

Tel: 01564 773351 [www.ronthompsonmachinery.co.uk](http://www.ronthompsonmachinery.co.uk)

**MACHINERY CLASSIFIED**

**0950 Mills, Universal**

**Non-CNC**



**BRIDGEPORT SERIES 1 BR2J2 (12454) TURRET MILL** R8 Spindle : Variable Speeds 50 - 3750 rpm : Table 42" x 9" : Chrome Slides : Power Feeds & Rapids Long. & Cross : Heidenhain 2 Axis DRO : Splash Tray : Coolant. Excellent - Ex - University Machine. POA

Email: info@bwmachinetools.co.uk

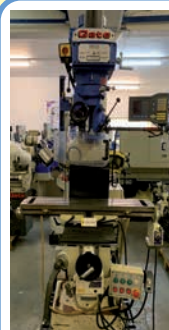
Tel: 0116 288 6070 [www.bwmachinetools.co.uk](http://www.bwmachinetools.co.uk)



**MILKO 90H Universal Mill with motorised Overarm. Made in Spain 2007.** Table 1900 mm x 360 mm, long travel 1400 mm. Spindles 50Int with pendant controls, DRO & Arbor supports

Email: phil@philgeesinmachinery.co.uk

Tel: 0114 279 7619 [www.philgeesinmachinery.co.uk](http://www.philgeesinmachinery.co.uk)



**Gate-PBM 2000 Turret Mill**, Ex-College, 42"x9" table, R8 Spindle, Variable Speed, Air drawbar, X & Y Axis, Power Feeds, Anilam, Wizard 411 DRO, Splash tray. Excellent Condition, GMU-061

Email: sales@gatemachinery.com

Tel: 01923 211000 [www.gatemachinery.com](http://www.gatemachinery.com)



**THIEL PRECISION TOOLROOM MILLER. EX-COLLEGE, TONS OF ACCESSORIES.**

Email: enquiries@machsell.co.uk

Tel: 0121 708 2255 [www.machsell.co.uk](http://www.machsell.co.uk)

**0980 Notching Machines, Angle**

**Non-CNC**



**COMACA HYDRAULIC CORNER NOTCHER MODEL EHN260** CAPACITY 260X260MM 4MM CAP IN MILD STEEL 3MM CAP IN STAINLESS GAUGES. BACKGAUGE TABLE GAUGES

Email: sales@wilsonmachinery.co.uk

Tel: 01245 221200 [www.wilsonmachinery.co.uk](http://www.wilsonmachinery.co.uk)

**The Online Market Place for New and Used Machine Tools**



[www.MACHINERYCLASSIFIED.co.uk](http://www.MACHINERYCLASSIFIED.co.uk)

**NEED ACCESS TO A  
GDPR COMPLIANT  
EMAIL DISTRIBUTION LIST?**

**CONTACT US ON  
01322  
221144**

**1060 Press Brakes**

**AMADA PROMECAM ITP 5020 CNC PRESS BRAKE.**  
**AMADA PROMECAM ITP 5020, CONTROL:** CNC EMA,  
 TONNAGE: 50 TONS LENGTH: 2000.0 mm, 3 AXIS CNC,  
 SICK LIGHT GUARD, FULL SET OF CLAMPS, UPSTROK-  
 ING PRESS BRAKE, QUANTITY OF TOOLING.  
 Email: enquiries@machsell.co.uk

Tel: 0121 708 2255

www.machsell.co.uk

**1300 Saws, Band, Horizontal**

**MEGA BS 400 SA Semi Automatic Horizontal Bandsaw,** 400  
 mm capacity, New 2012 Hydraulic quick action vice, Power  
 driven blade brush, Floating roller feed mechanism.  
 Email: phil@philgeesinmachinery.co.uk

Tel: 0114 279 7619

www.philgeesinmachinery.co.uk

**1450 Steelworkers**

**UNIMACH Mach 650 Universal Steel Worker,**  
 65 Ton Capacity. With Measuring Bar.  
 Email: phil@philgeesinmachinery.co.uk

Tel: 0114 279 7619

www.philgeesinmachinery.co.uk



**AMADA SPH-30C 30 TON  
 HYDRAULIC DOWNSTROKE  
 PRESS BRAKE . AMADA  
 SPH 30C, TONNAGE: 30  
 TONS, DISTANCE BETWEEN  
 UPRIGHTS: 510.0 mm  
 LENGTH OF STROKE: 100.0  
 mm, OPEN HEIGHT: 520.0  
 mm, BENDING SPEED:  
 9 mm/sec, POWER  
 REQUIRED: 3 kVa, AMADA  
 CNC AUTO BACK GAUGE,  
 HYDRAULIC MACHINE.**  
 Email: enquiries@machsell.co.uk

Tel: 0121 708 2255

www.machsell.co.uk

**1365 Shears, Guillotine****Non-CNC**

**AMADA MODEL G-SERIES HYDRAULIC GUILLOTINE**  
**GS 630 YOM 1999, 6.35 MM CAPACITY IN MILD STEEL**  
 CUTTING LENGTH 3050MM, NC CONTROL PROGRAMMABLE  
 BACK GAUGE, BLADE GAP ADJUSTMENT, RAKE ANGLE  
 ADJUSTMENT, LIGHT GUARDS ON REAR, MACHINE WEIGHT  
 6150KGS. Email: sales@wilsonmachinery.co.uk

Tel: 01245 221200

www.wilsonmachinery.co.uk

**1580 Woodworking Machinery**

**VOLPATO NTS 150C HEAVY  
 DUTY EDGE SANDER**  
 (12469) 150mm Wide Sand-  
 ing Belt : Belt Oscillates Up  
 & Down : 55mm Diameter  
 Bobbin Sander Attachment  
 : Tilting Table : 3 Phase :  
 Ex - University - As New  
 Condition. £2950  
 Email:  
 info@bwmachinetools.co.uk

Tel: 0116 288 6070

www.bwmachinetools.co.uk



**CARTER 5 Axis Hydraulic CNC Downstroke Pressbrake**  
**(2013), Capacity 4000mm x 200 Ton, 3000mm Between**  
**Frames, 5 Axis CNC 2D Touch Screen Control, Front safety**  
**guards, Wandering electric foot control, CE Mark, Tooling,**  
**Excellent Condition Email: sales@ronthompsonmachinery.co.uk**

Tel: 01564 773351

www.ronthompsonmachinery.co.uk



**DURMA MODEL SB 4006 NT HYDRAULIC GUILLOTINE**  
**4000MM X6MM MILD STEEL, POWER BACK GUAGE, BLADE**  
**GAP ADJUSTMENT. Email: sales@wilsonmachinery.co.uk**

Tel: 01245 221200

www.wilsonmachinery.co.uk



**CARTER CNC Hydraulic Guillotine (2014), Capacity 10mm**  
**x 3200mm, Programmable Touch Screen CNC Control,**  
**Powered Backguage, Blade Gap, Cutting Length Adjustment,**  
**Squaring Arms and Support Arms, Hardened Multi Edged**  
**Blade, CE Marked. Excellent Condition.**  
 Email: sales@ronthompsonmachinery.co.uk

Tel: 01564 773351

www.ronthompsonmachinery.co.uk

**1227 Riveting Machines**

**No 1 in the UK for  
 USED  
 RIVETING  
 MACHINES**

We Supply:-

- Checked Over Machines
- Most Types Available
- Excellent Prices
- Tooling
- Service

1,000's of Sales during  
 30 years' of Trading

**Tel: 01788 833301**  
**Fax: 01788 833481**  
**Mob: 07860 642995**  
**www.wgchallenger.co.uk**  
**E: wgcrivet@gmail.com**

**NEED HELP SELLING A MACHINE?**

Call us on **01322 221 144** to  
 discuss a customised marketing campaign.

**The Online Market Place for  
 New and Used Machine Tools**  
**MACHINERY CLASSIFIED**

**MACHINERY  
CLASSIFIED****GOOD THINGS  
COME TO THOSE  
WHO WAIT**

The all new Machinery Classified  
 website is now **LIVE!**

Take a look for yourself. We think  
 you'll agree it was worth the wait.

- 1000's of machines available to buy now
- Comprehensive Search Facilities
- Machines updated on a daily basis
- Dedicated Auction Calendar
- Post FREE Wanted Listings

**www.machineryclassified.co.uk**



**2000 Machinery Wanted**

# WANTED

## CNC & CONVENTIONAL MACHINES

Colchester lathes  
Bridgeports turret mills  
Jones & Shipman grinders  
Any age or Model

Emails to: [info@bwmachinetools.co.uk](mailto:info@bwmachinetools.co.uk)

Or WhatsApp details to  
**07802 978608**



**3260 Machine Tool**

### PRECISION SPINDLE REBUILDING

We offer a complete rebuild service of:  
CNC machining centre spindles, CNC lathe heads,  
Grinding spindles (both belt driven & high frequency types),  
Tailstocks, Fine boring spindles, Milling spindles, Centre-  
less grinding spindles, workheads, wheelheads etc.



**TECHNOVA PRECISION LTD**  
Tel: 02476 366503 • Fax: 02476 361979  
Web: [technovaprecision.com](http://technovaprecision.com) • Email: [will@technovaprecision.com](mailto:will@technovaprecision.com)

**ROTATECH LTD**  
Spindle rebuilding and repair services  
20 Cavans Way, Binley Industrial Estate, Binley, Coventry CV3 2SF

**Tel: 02476 452600**  
**Fax: 02476 452645**  
web: [www.rototech.com](http://www.rototech.com)  
email: [sales@rototech.com](mailto:sales@rototech.com)

## SPINDLE REBUILD AND REPAIR

### SPINDLE TYPES

- CNC Machining Centres
- CNC Lathes
- Grinders
- Boring Heads
- Head Stocks
- Tail Stocks
- Conventional Machine Tools etc.



**2005 Bearings Wanted**

## SURPLUS BEARINGS WANTED

Call Martin 07802 928128  
Office 0114 231 0310  
[martin@bearingwarehouse.co.uk](mailto:martin@bearingwarehouse.co.uk)

**2110 Lathes Wanted**

## NOBILLA MACHINE TOOLS (1980) LTD Colchester Lathe Specialists



See our website: [www.nobilla.co.uk](http://www.nobilla.co.uk) • Email: [simon@nobilla.co.uk](mailto:simon@nobilla.co.uk)

The largest choice is here! Serviced and brought up to a very high standard plus warranty.  
Very important to customers that buy our machines is our after sales service.  
**But we buy/sell all machine tools**

**LATHES, LATHES, LATHES** are what we do. **COLCHESTER LATHES** are what we specialize in. **SPARES & ACCESSORIES** we have in stock. New/used.

**Tel: 01438 812409 Mob: 07940 894 982**

# The Online Market Place for New and Used Machine Tools



WWW.  
**MACHINERY  
CLASSIFIED**  
.co.uk

THOUSANDS OF MACHINES  
AVAILABLE ONLINE

# MACHINERY CLASSIFIED

[www.machineryclassified.co.uk](http://www.machineryclassified.co.uk)



LOTSURF.COM

**PRIVATE TREATY SALE**



Under probate instruction, on behalf of the widow of a local businessman, we are pleased to offer for sale an almost new condition JCB digger and fuel bowser, plus a quantity of spare buckets all owned by the deceased.

*They have been maintained to the highest standard.*



**Date:** 16th September



**Location:** Stockton on Tees



**Collection No Later Than:** 30th September

*Viewing by Appointment Only*

- JCB 3CX SITEMASTER EASY CONTROL TIE, MFD September 2010,

Fuel Bowser on a Western Trailer

**[www.lotsurf.com](http://www.lotsurf.com)**

Fairfield Industries, Bowesfield Crescent, Bowesfield Lane Industrial Estate, Stockton on Tees, TS18 3HJ  
Tel: 01642 221100 Fax: +44 (0) 1642 227740 Email: [info@lotsurf.com](mailto:info@lotsurf.com)





## TOP PRICES Paid

For **all sheet metal machinery** inc CNC lasers, pressbrake, shear rolls, process equipment, hydraulic presses, ducting equipment, folders, roll form machinery and kindred equipment.

**Immediate payment** and removal single machine including complete factories.

**We will take all your part exchanges.**



Mob - 07834205699 / 07860765184



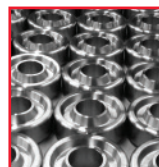
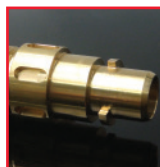
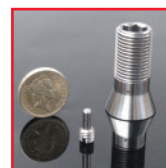
Email - [sales@zebramachinery.com](mailto:sales@zebramachinery.com)

## The Online Market Place for New and Used Machine Tools



www. **MACHINERY CLASSIFIED** .co.uk

## Wealdpark Limited



- Latest range of CNC sliding and fixed head lathes, with bar capacity up to 65mm and vertical machining centres. This enables us to offer precision repetition engineering to the most exacting standards with quick turnaround times.
- Components can be manufactured from a wide range of materials including steel, brass, stainless steel, aluminium, copper, phosphor bronze and plastics.
- We produce turned parts for a growing range of users spanning the aviation, military, electrical, automotive, fluid power and other high-spec industries. military, electrical, automotive, fluid power and other high-spec industries.

### Standard approvals

BS EN ISO 9001: 2015  
Approved by BSI since 1991



**Phil Smith, Director, Wealdpark Limited**  
Sutton Road, St. Helens, Merseyside, United Kingdom WA9 3DJ  
**Tel:** 01744 22567 or 01744 732083 **Fax:** 01744 451339  
**Email:** [sales@wealdpark.co.uk](mailto:sales@wealdpark.co.uk) **Web:** [www.wealdpark.co.uk](http://www.wealdpark.co.uk)





# W&H PEACOCK

AUCTIONEERS & VALUERS

## TO BE SOLD BY ONLINE TIMED AUCTION

Under Instructions from the director of Weldwide Services Ltd following retirement

## Metal Fabrication Plant, Stock and Tools & Mitsubishi Trucks

**Viewing: Friday 10th and Monday 13th September** 9am - 5pm

At National Works, 9, Bath Rd, Hounslow, Middlesex, TW4 7EA

**Sale Closes: Tuesday 14th September 2021**

Bids Closing 11.00am (subject to staggered timing and the ten minute rule)

Tel: 01234 266 366 or [info@peacockauction.co.uk](mailto:info@peacockauction.co.uk)

**[www.peacockauction.co.uk](http://www.peacockauction.co.uk)**

### Modern Fabrication Plant

Hydmech V18APC-60 CNC automatic vertical band saw with feed roller system, year 2018; Swift Cut Automation 3000 XP plasma cutter, 3m table with Hypertherm MaxPro 200 plasma cutting system, control and removable head, year 2018; Morgan Rushworth HSP 125 CNC triple head hydraulic punching, machine, year 2016; Kingsland KTXS 3012 hydraulic guillotine 3m x 12mm, year 2002; Ermaksan CNC P3100-160 press brake with Delem DRO, 160 ton capacity, year 2003; CML Ring roller with spiral rolling attachment and full tooling, year 1999; Cevisa CHP12 beveling machine, year 2015; Scantool 100RS tube notcher/scalloper, year 2008; Meyer SR32AE 32mm capacity pillar drill; ACS Model OMF25005 3 box 3 filter dust extraction/air cleaning unit, refurbished 2006; Two Crearmetal Crea Swiss welding frame/jigs; HPC Plusair SM11 rotary screw air compressor with 1015 TBH30 chiller and vertical air receiver; Kepp 150 belt grinder/finisher; Colchester Student GB centre lathe, year 1954;

### Welders and Associated Equipment

Miller Compactblu 201 welder; Thermal Arc Fabricator 330 welder with VF2 wire feed; Thermal Arc 250C Mk111 welder; Thermal Arc 250 welder; Kemppi Kempact 323A welder; Kemppi Kempact 251A welder; Thermal Dynamics Pak Master 5e air plasma cutter; welding rotator; stud welder; Jasac Power Tig welding set together with other welders and accessories

### Mitsubishi Trucks

'70' plate Mitsubishi Fuso Canter 3C15 flat 14 ft bed truck 3.5 ton, 2049 miles

'70' plate Mitsubishi Fuso Canter 3C15 10ft 6" flat bed truck, 850 miles

### Fork lifts, Cranes and Factory Handling Equipment

Combi lift C4000 LPG multidirectional 4 tonne capacity side loader, year 2007; Clark CMP25 counterbalance diesel forklift truck with double mast, 3918 hours, year 2005; Still tugger electric train together with 4 wheel steel trailer; 1 tonne electric battery stacker; Niko 500kg gantry crane with traveller, beams and RSJ roof frame; Jib crane with electric chain hoist; GGR Unic plate lifter;

### Hand Tools & Factory Equipment

Gen set Senci SC9000E MKZ petrol generator; Genie Superlift material lift; Minifor TR30 hoist; Rhyas RH300 battery charger/starter; Van vault storage boxes; Steel plate lifting hooks; A range of lifting straps; Welding benches; Pallet racking; Stock cantilever racking; Two scissor platform work lifts; Belle ½ bag cement mixer; Forklift tipper bin; A wide range of hand held electric tools, clamps, etc

### Container

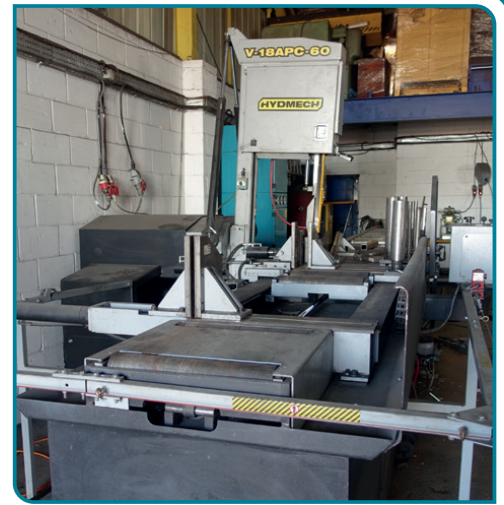
Ex MOD 10ft x 20ft insulated building/storage container; Van body storage container

### Stock & Raw Materials

The remaining stock of mild steel plate, bar, box section rod, and tube; A wide range of fencing and gate finials, features, etc; stocks of fixings, welding consumables, finishes, and many other items; Two refurbished exterior spiral staircases

### Office Furniture, Equipment & Other Assets

The office furniture and IT equipment including an HP wide format printer; CCTV system; Piaggio Scooter; Pashley Guv'nor



# More versatile 5 axis machining

- ✓ Capacity
- ✓ Quality
- ✓ Price
- ✓ Footprint
- ✓ Performance

## THE SRTi AND SWi RANGE OF MACHINING CENTRES

Direct drive torque motors for the B and C axes provide, fast and responsive 5 axis motion. The 600mm diameter, 500Kg capacity rotary C axis is set in the table, meaning that full-capacity 3 axis machining can be achieved within the working envelope. Heavier and larger 5 axis components can also be handled when compared to the equivalent trunnion style machine.



Available with automated pallet loading at a very competitive price

**OPEN HOUSE 6<sup>TH</sup>, 7<sup>TH</sup> OCTOBER, CHECK WEBSITE FOR DETAILS**

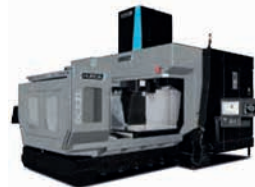
MACHINING CENTRES

TURNING CENTRES

5 AXIS

DOUBLE COLUMN

SUPERIOR CONTROLS



**HURCO**  
EUROPE

12 Merlin Centre • Lancaster Road • Cressex Business Park  
High Wycombe • Buckinghamshire • HP12 3TB • Tel: (01494) 442222  
sales@hurco.com • service@hurco.com • www.hurco.com